

*Feel the real enlivenment.*



  
**Dwarkamai**

... HEIGHTS ...

*Feel the real enlivenment.*

1 & 2BHK LUXURIOUS HOMES

AND SHOPS

[www.spventure.in](http://www.spventure.in)

# Dwarkamai

... HEIGHTS ...

1 & 2BHK LUXURIOUS HOMES

AND SHOPS

COME, EXPERIENCE A REAL GATED COMMUNITY.

Dwarkamai Heights

SP Associates with 15 to 20 years of experience is implementing this project in Charholi.

Dwarkamai Heights will thrive in a gating community where 30+ happy families reside.

The reason being homes with well-planned spaces that offer maximum usable floor space, minimum common walls, space-efficient kitchen and great natural ventilation.

Dwarkamai Homes offers a warm and welcoming ambience for all to enjoy.

COME, EXPERIENCE A RISING NEIGHBOURHOOD.

Charholi is a new growing highly coveted area located in the heart of Pimpri-Chinchwad. It has developed into one of the most promising residential localities in the neighbourhood. Superior connectivity via wide roads, top medical and educational facilities, entertainment and shopping destinations and great public infrastructure make

Charholi a highly convenient

residential destination. Even major industrial destinations like Alandi, Bhosari, Viman

Nagar & Pune are just a short drive away.

**Everyone Deserves the Opportunity of Home... let's grab this.**



Project By :

**DWARKAMAI**  
ASSOCIATES

Constructed By :

**S.P. Associates**  
Construction & Developer



Dwarkamai  
HEIGHTS

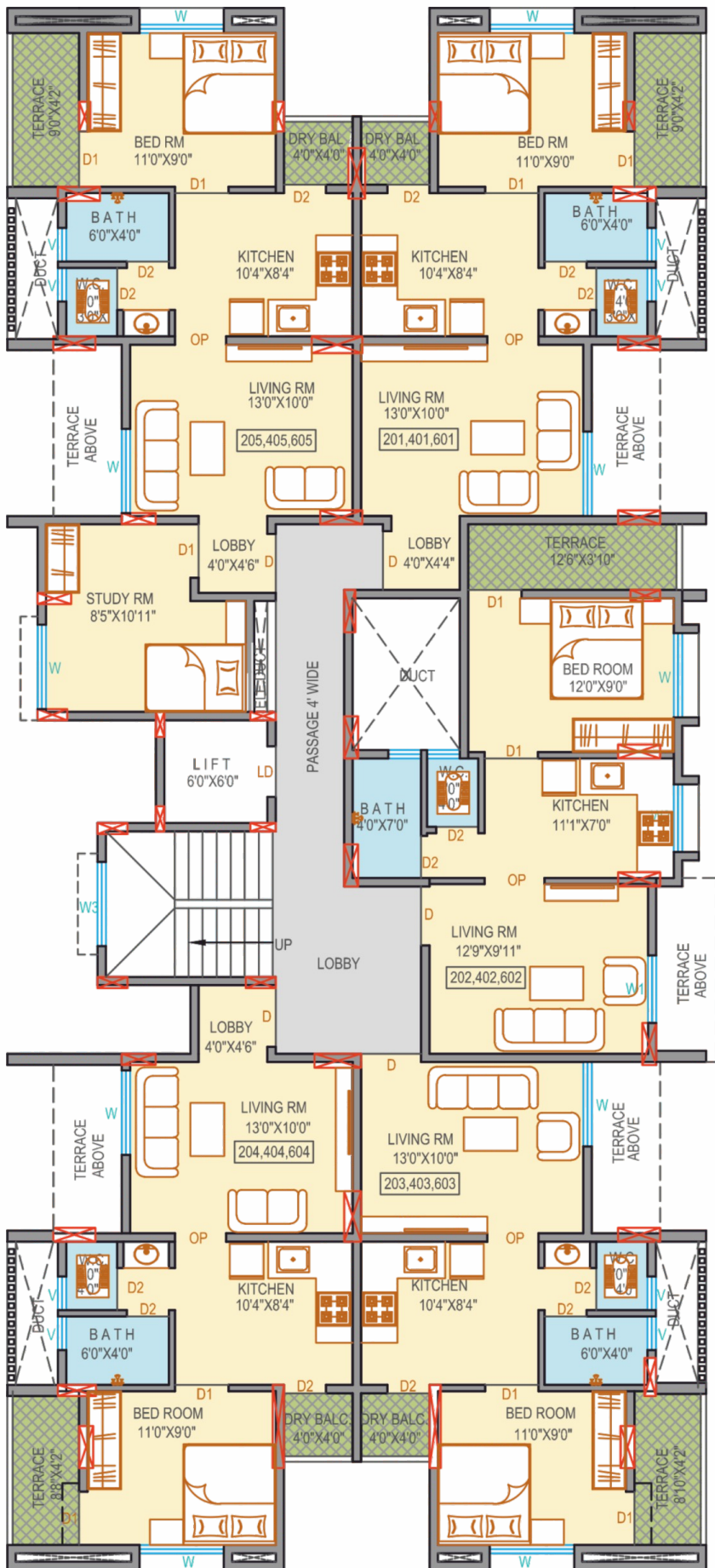
*Feel the real enlivenment*



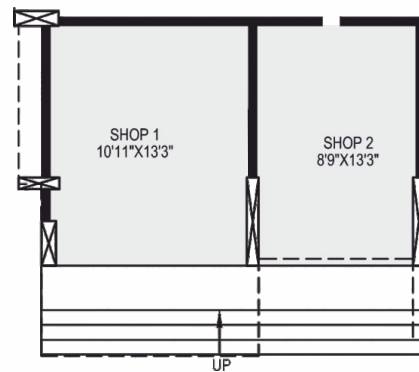




# TYPICAL FLOOR PLAN



TYPICAL 2nd, 4rth & 6th FLOOR PLAN



TYPICAL SHOP FLOOR PLAN

# Dwarkamai

... HEIGHTS ...

*Feel the real enlivenment.*

1 & 2BHK LUXURIOUS HOMES

AND SHOPS



1BHK FLOOR PLAN



2 BHK FLOOR PLAN



# SPECIFICATION



## Structure :

- Earthquake resistant RCC framed structure with 5 inch fly ash bricks/ AAC blocks

## Plaster :

- External double coat sand faced plaster  
Internal gypsum / POP plaster

## Painting :

- Internal walls in oil bond distemper
- External walls in acrylic paint

## Toilet :

- Decorative glazed tiles of size 300 x 450 mm
- C.P. fitting of Jaguar or equivalent brand
- Sanitary wares of Hindware or equivalent brand
- Provision for exhaust fan and geyser

## .Kitchen :

- Granite platform with SS sink
- Dado tiles upto lintel level above platform
- Provision for water purifier, Exhaust fan etc.
- Provision for washing machine in dry balcony

## Electrical :

- Concealed fire resistant copper wiring of Polycab or equivalent brand
- Modular switches of Legrand or equivalent brand
- Provision for AC in master bedroom
- Provision for inverter
- Provision for TV point, telephone in Living room

## Lift :

- 8 Passenger lift with Light Backup

## Flooring :

- 2x2 Vitrified tiles in all room
- Anti skid tiles for bathrooms, dry balcony and terraces

## Doors :

- All doors-good quality laminated flush door with necessary fitting
- WC-Bath doors-good quality PVC door with necessary fitting & Granite Frames

## Windows :

- 3 track powder coated aluminum sliding windows with mosquito net
- MS safety grills for all windows

# SITE LOCATION

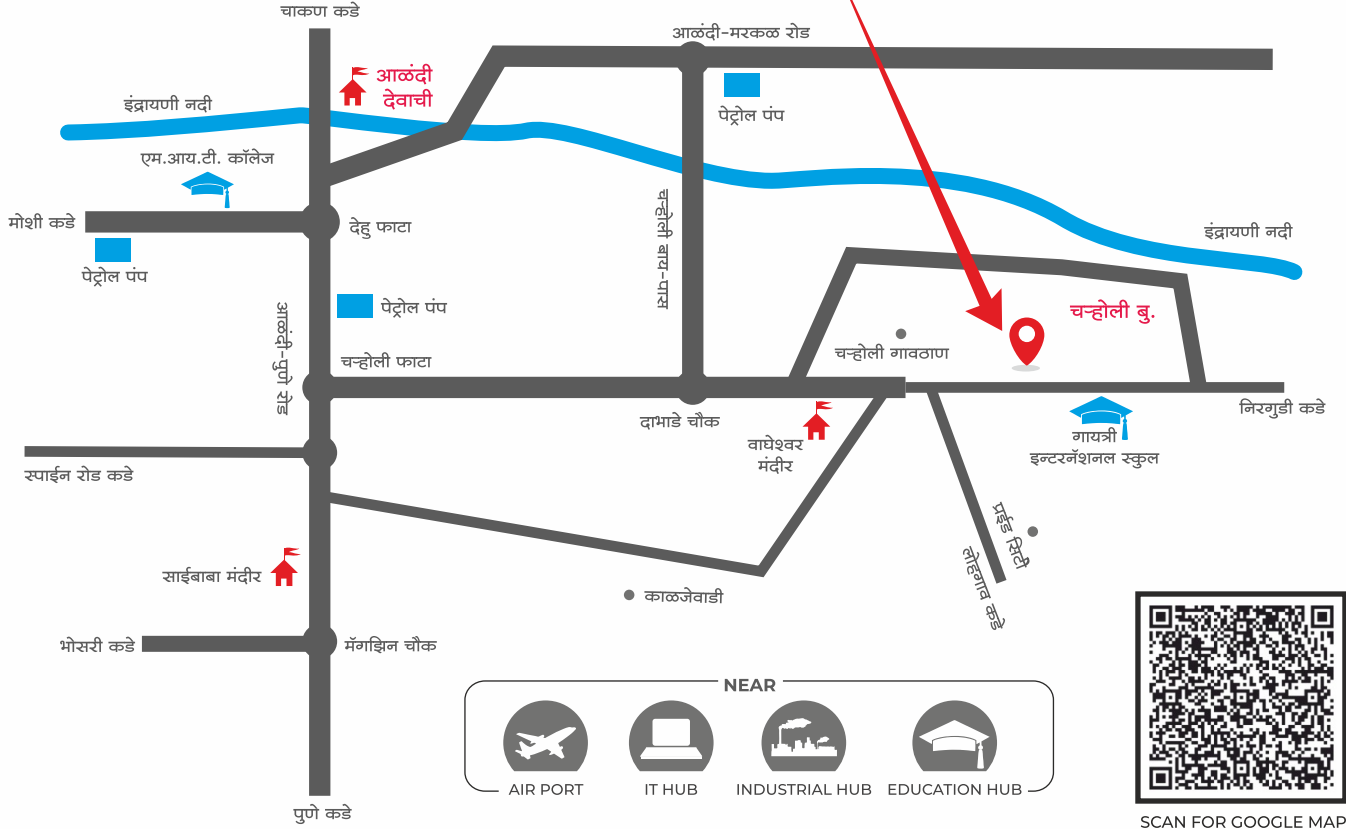
## Dwarkamai

... HEIGHTS ...

Feel the real enlivenment.

1 & 2BHK LUXURIOUS HOMES

AND SHOPS



Project By :

**DWARKAMAI**  
ASSOCIATES

Constructed By :

**S.P. Associates**  
Construction & Developer

Address: Charholi Budruk - City Survey No. 534/ 535, Charholi Budruk Gavthan,  
Nirgudi Rd, Near Gayatri English Medium School, Maharashtra 412105

**Office : 8888802009 Mobile : 9881831673 / 9107272727 / 9049682676**

www.spventure.in | Email: dwarkamaiaassociates21@gmail.com | spassociate23@gmail.com



Registration Certificate No.  
P52100046861



MEMBER / G-35

Disclaimer : This brochure is purely conceptual and a legal offering nor will it be part of the agreement. Nothing contained in this brochure will take precedence in the final agreement. Number of building, areas tentative measurements, amenities, specification, floors, numbers of flats / units may be revised. Promoters reserve the right to amend the Layout, plans, elevations, designs, specifications, amenities, etc. without notice.